



Kingsley Montessori School volunteers

♻️ PRINTED ON RECYCLED PAPER
50% Post-Consumer Waste

THE ESPLANADE ASSOCIATION STAFF

Patrice Todisco, *Executive Director*
Jen Roy, *Volunteer and Community Enrichment Program Coordinator*
Emily Stein, *Accounting*
Guenaelle Rubin, *Administrative Assistant and External Affairs Coordinator*

BOARD OF DIRECTORS

Sandy Steele, *President*
Jim Duane, *Vice-President*
Ellen Rooney, *Clerk*
Hans Vaule, *Treasurer*
Fritz Casselman
Roseanne Colot
Robert Duboff
Dr. Karin Dumbaugh
Rich Lucas
Herb Nolan
Jeryl Oristaglio
Margaret Pokorny
Sarah W. Reinstein
Deb Rosenbloom
David Solomon
Jim Whitters
Steve Wolf



Mary Ann Hill of NABB and Peter Gori, co-chair of the Council

Photo by Roger Farrington

Young Professional Council Organizes to help the Esplanade

The Esplanade Association Council kickoff celebration, held on July 11th at the Union Club, was a huge success hosting over 160 guests and raising over 3,000 dollars for TEA. The Esplanade Council is a dynamic group of young professionals involved in recreational, cultural, and volunteer activities in the park. If you'd like to become involved with the Council or for more information, please **contact Sarah Reinstein at ecouncil@esplanadeassociation.org**.



Calling all Runners!

A RUN ON THE ESPLANADE FOR THE ESPLANADE
Sunday, September 30
10:00 am start time
\$ 20 Entry fee For Members of TEA

Sponsored by EQUINOX Fitness Clubs, SIMPSON HOUSING, and UPPER CRUST PIZZERIA. Managed by Dave McGillivray Sports Enterprise.

For more information and to register:
www.esplanadeassociation.org

► **The Council's first project will be a 5K race held on the Esplanade, with post race activities including awards and light refreshments from local restaurants.**

MEMBERS UPDATE



WORKING TO RESTORE AND ENHANCE BOSTON'S HISTORIC ESPLANADE.
www.esplanadeassociation.org

User Counting Study & Survey

Throughout the summer months TEA volunteers have continued to record information about park users as part of our ongoing research into public use, perceptions and needs for the Esplanade. Funded by the Boston Foundation, this project is the second phase in our ongoing efforts to determine how the public uses the park, the demographics of park users, what activities occur most frequently and if there are uses that are not being served, or opportunities to revise and expand programming on the Esplanade.

To date over 300 on-site interviews, 8 counting days, and behavioral mapping have taken place in the park. In addition, a series of 25 telephone interviews have been completed with key Esplanade stakeholders. A community forum is being scheduled for mid October to discuss preliminary findings and next steps.

So the next time you see a TEA volunteer in the park with a clipboard in hand they may ask you your zip code or to spend some time answering a few questions. Thanks in advance for helping out.

MYSTERY PHOTO



Where on the Esplanade? See inside...

First Teen Leadership Program on the Esplanade

If you noticed the new mural under the Bowker Overpass or a group of beige-clad youth working on the Esplanade this summer, you've been witness to the work of TEA's first-ever Teen Leadership Program.

Eight youth ages 15 – 17 worked 25 hours weekly for six weeks, from July 9th to August 17th in the program. They hailed from all corners of Boston including Mission Hill, Dorchester, and Mattapan, and only half had ever set foot in the Esplanade before they started work. Their presence in the park provided an abundance of youthful ideas and energy for The Esplanade Association. The program was supported with generous donations from the Boston Youth Fund, the Blossom Fund, and an anonymous foundation.



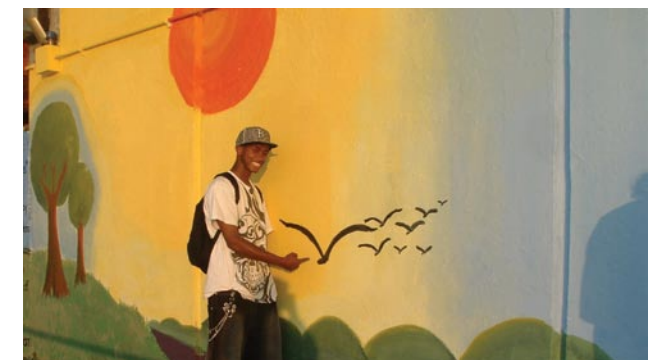
The teens took part in an extensive curriculum developed by their supervisor, **Ninya Loeppky**. Half of their time was spent working on park maintenance projects and half being exposed to new experiences special to the Esplanade.

From a trip down the Charles in the Cleanup Boat to classes at Community Boating and a session with the Boston Model Sailing Club, the teens broadened their horizons and learned about the Esplanade's history, ecology, and importance to the city. Through an interactive session with staff from the Charles River Watershed Association and a boat cruise with other environmental organizations, the teens gained insight into pressing issues such as blue-green algae currently affecting the Esplanade.

They also left their own lasting impression on the park, a beautiful mural under the Bowker Overpass. Designed with artist **Tova Speter**, the mural drew hundreds of compliments from park users while in progress and was a first-ever painting project for most of the teens. Other projects the teens worked on were planting on the Esplanade, ushering at Wednesday's Boston Landmarks Orchestra concerts, and taking part in the park user counting study.



Overall, TEA's Teen Leadership Program was a success! The teens learned valuable landscaping and leadership skills and were exposed to new people, places and environmental careers. Their projects beautified the park to the enjoyment of park users, and TEA gained new insight into how to host future teen programs including a possible Youth Council.



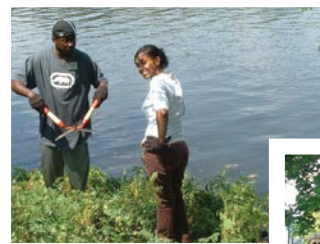
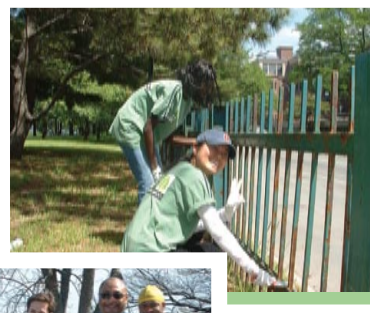
VOLUNTEERS' CORNER

The Esplanade Association's volunteer program has been very busy in 2007! From January through July, we have had over 1500 volunteers in the park, with each individual spending between two to five hours on a project. This means that our volunteer program has brought between 3,000 and 7,500 hours of donated labor to the Esplanade in the last 7 months, at an estimated worth of between \$22,500 and \$56,250, if calculated at the minimum wage rate of pay!

Winter and early spring projects focused on tree pruning, trash/debris cleanup, and raking along the river and lagoon banks. During mid-spring and early summer, volunteers continued to cleanup and began invasive (non-native) species cutting as well as planting, and footbridge and fence painting projects. TEA also began the park user counting study in which volunteers obtained over 1,400 different zip codes from park visitors over a four day period. As the summer comes to a close, we have completed the park user counting study and continued invasive species cutting, weeding, planting, and Storrow Drive fence painting.

The second half of 2007 appears to be equally busy with scheduled volunteer events from universities and school groups as well as corporate and non-profit organizations. We especially appreciate our relationship with Boston

Cares, Single Volunteers Boston, Northeastern, Emerson, Suffolk, Boston University, and Fidelity Investments who send us volunteers on a regular basis.



TEA Sponsors Successful Boston Model Sailing Program

The Boston Model Sailing Club (BMSC) program is having an active season, averaging 75 participants per session coming to watch our miniature Lasers and CR 914s sail on the lagoon on Wednesday and Sunday afternoons. Of these, about 25 to 30 people, ranging in ages from five to eighty five, actively participate by taking a radio remote controller and sailing the boats themselves, regardless of experience!

We have a dedicated group of volunteers, Erik Bullerjahn, John Storrow, and Tracey Anderson leading our program and they have already hosted twelve free sailing afternoons, with more planned. You can check out the sailing schedule on our website and come down to enjoy this exciting and historic sailing opportunity for all ages.

Boat Haven Docks Fundraising Continues



The deteriorated docks at Commissioners Landing were removed in early summer and if all goes as planned will be completely rebuilt before the winter sets in.

Replacing these docks has been a priority of The Esplanade Association and we continue to raise funds for this purpose in partnership with the Union Boat Club and Community Boating to match a \$200,000 challenge grant offered by the Solomon Fund. We have \$80,000 left to raise and with an October 1st deadline, we need your support. Please consider supporting this important project.



On the Esplanade...

TEA was pleased to welcome the first series of Boston Landmarks Orchestra's free classical concerts performed at the Hatch Shell from July to September. TEA's Teen Leadership participants and volunteers greeted and ushered guests ensuring a safe and enjoyable concert experience. We are excited to have such spirited classical performances back on the Esplanade and look forward to working with the BLO on next year's concert series.

Storrow Drive Update

At a meeting of the joint transportation and landscape advisory committees for the Storrow Drive Tunnel Reconstruction project on August 15th, Department of Conservation and Recreation (DCR) Commissioner Richard K. Sullivan announced that they were reopening the option of using the Esplanade as a by-pass road during the project's construction period. This is an action that The Esplanade Association strongly opposes.

The Commissioner also informed the committees that DCR is leaning towards recommending option A, the rehabilitation of the existing tunnel. This option maintains the existing configuration of the Esplanade and Storrow Drive while replacing the Arthur Fiedler footbridge with a new ADA compliant structure. The project is estimated to take a minimum of 2.5 years to construct and cost approximately 52 million dollars.



Area near the Arthur Fiedler Footbridge to be affected by plan.

DCR is scheduled to file the Draft Environmental Impact Report in late September. THE ESPLANADE ASSOCIATION IS COMMITTED TO KEEPING THE TEMPORARY ROADWAY OUT OF THE PARK AND ENCOURAGES YOU TO ACCESS OUR WEBSITE www.esplanadeassociation.org FOR STORROW DRIVE UPDATES AND ALERTS. We also encourage you to contact DCR and your elected officials to express your opinion on this issue.

Meet the Crew—Mike Cassidy, DCR



Mike Cassidy, Recreational Facilities Manager for the Esplanade, is a busy man. A native to the Boston area, Mike has worked for the Department

of Conservation and Recreation (DCR) for the past 14 years. This has included positions at the Charlestown Skating Rink and Revere Beach - and for the past 4 years he has held fast to the shores of the Charles River Esplanade.

"My job is to make sure the Esplanade is clean and safe from end to end," says Mike. Whether that means removing trash and covering up graffiti, making repairs and supervising contract laborers, or navigating his boat along the shore to set up buoys for special events, Mike is up for the task. His walkie-talkie

is always close at hand, and he's ready to respond to the myriad of issues that arise in a typical day of public park management.

Mike's favorite part of the job is running special events - and not because of the famous performers. "You meet so many different people," Mike says, "that's what makes it fun." The weeks before and after a big event like the 4th of July are chockfull of behind-the-scenes efforts, and he enjoys the responsibility.

"People love the Esplanade for its beautiful scenery. It's a place to relax and put your feet up" Mike says, and he's pleased that so much is being done to restore park features, fix docks, and care for trees. Mike also enjoys working with TEA staff and volunteers, and he always has a selection of snacks to boost worker morale. For his generosity and his constant support, we are very grateful.

Lee Pool Update

Throughout the summer, planning has continued for the Lee Pool facility. Led by the Department of Conservation and Recreation (DCR) and their consultants, ICON Architecture, the process has engaged community stakeholders and organizations. Goals for the process include the creation of an illustrative site plan and program as well as the development of clear parameters for the creation of a public private partnership.

Common themes have emerged that will inform future planning endeavors. These include a use that focuses on water, river or environmental education as seen from a historical, social and scientific perspective, water related recreational uses, wellness, regional public outreach, accessibility, year round activity, the protection and enhancement of the site's open space character and green development.

For more information about the process contact: Project Manager Rick Corsi of the Department of Conservation and Recreation at 617-626-1250.

NEW TEA COLLABORATIONS



TEA is proud to have been chosen to participate in Boston Athletic Association's Charity program for the 2008 Boston Marathon®. Check out our website to access information about how you can participate.

TEA and the Advent School have agreed to partner on an "adopt-a-park" pilot project on the Esplanade for the coming year. A dedicated area of the park will be cared for by the school complemented by lessons that use the park as an outdoor classroom.



What is it? (MYSTERY PHOTO answer)
It is the Oliver Wendell Holmes monument, built in honor of the poet and physician who was born and raised in Cambridge and later lived along the Charles River, overlooking the Esplanade. Famous for penning "Old Iron Sides", the classic poem about the USS Constitution, he also taught anatomy at Harvard University, and published essays on everything from medicine to history to truth, music, and the Charles River.